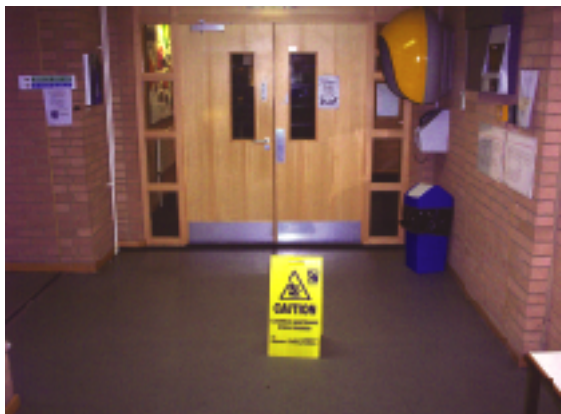


It is your RESPONSIBILITY to display warning signs

- Position your signs **before** commencing work.
- Place at **all** entrances to the area.



- **DO NOT** remove the sign until the floor is dry and safe to walk on and any electrical equipment has been put away.

Please phone
01432 273434
should you require a warning sign



We value your Health & Safety at Work and welcome any suggestions or comments.